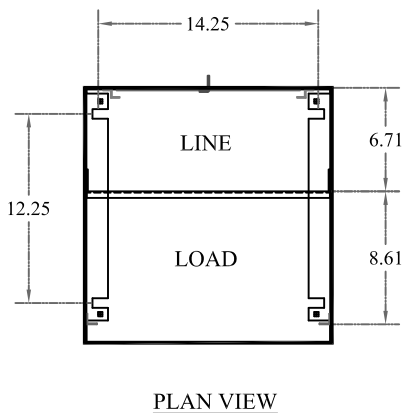


UN-METERED SERVICE PEDESTAL OF MISSOURI DEPARTMENT OF TRANSPORTATION

TYPICAL APPLICATIONS INCLUDE UN-METERED STREET LIGHTING

STANDARD FEATURES:

- UTILITY LANDING LUGS 250kCMIL
- STANDARD VOLTAGE 120 / 240 VAC 1-PHASE 3-WIRE
- CIRCUIT BREAKER INTERIOR COPPER BUS 12-CIRCUIT
- LIGHTNING ARRESTER 650VAC (OPTION)
- MERCURY RELAY AND TERMINAL BLOCK SIZED FOR EACH LIGHTING CIRCUIT AS REQUIRED
- DOOR STOP TO PREVENT CUSTOMER DOOR SWINGING CLOSE
- PHOTOELECTRIC SOCKET



SPECIFICATIONS

- * NEMA 3R CONSTRUCTION
- * 0.125 THK ALUMINUM NATURAL/NON-ANODIZED
- * OPTION 12GA. STEEL
 - + POLYESTER POWDER-COATED FINISH EXCEEDS ASTM B-117 SPECIFICATIONS
 - + FABRICATED FROM CORROSION-RESISTANT ZINC-COATED STEEL
 - + FOREST GREEN COLOR STANDARD CUSTOM COLORS AVAILABLE
- * ALL FACTORY WIRING 600 VOLT RATED COPPER
- * ALL COMPONENTS UL LISTED
- * ALL EXTERIOR DOORS AND COVERS PADLOCKABLE
- * UTILITY COVERS SEALABLE