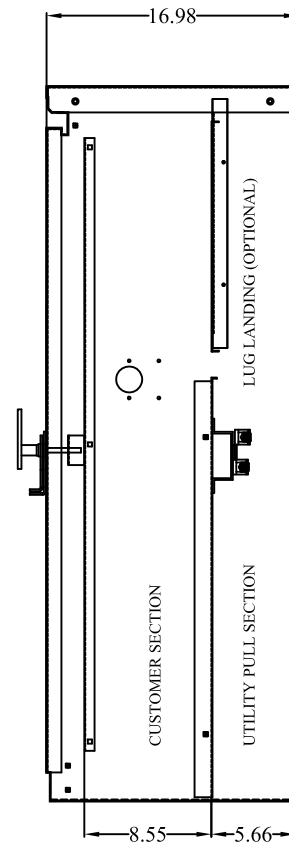
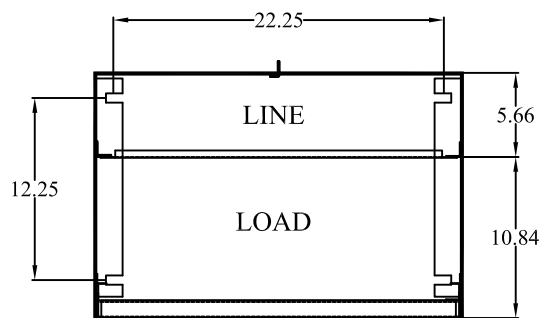


FRONT VIEW



SIDE VIEW



PLAN VIEW

### UNMETERED SERVICE PEDESTAL

TYPICAL APPLICATIONS INCLUDE LIGHTING CONTROLS FOR COURT AND BALLFIELDS; IRRIGATION AND BOOSTER PUMP CONTROLS

#### STANDARD FEATURES

- LANDING LUGS 250kCMIL
- STANDARD VOLTAGE 120/240VAC 1-PHASE 3-WIRE
- CIRCUIT BREAKER INTERIOR SIZED FOR JOB SPECIFICATIONS
- DEADFRONT CONSTRUCTION WHEN REQUIRED

#### SPECIFICATIONS

- \* NEMA 3R CONSTRUCTION
- \* POLYESTER POWDER-COATED FINISH EXCEEDS ASTM B-117 SPECIFICATIONS
- \* FABRICATED FROM CORROSION-RESISTANT ZINC COATED STEEL
- \* AVAILABLE IN ALUMINUM & STAINLESS STEEL

- \* LIGHT GREEN COLOR NO. 14672 PER FEDERAL SPECIFICATIONS 595 -
- \* ALL FACTORY WIRING 600 VOLT RATED COPPER
- \* ALL COMPONENTS UL LISTED
- \* ALL EXTERIOR DOORS AND COVERS PADLOCKABLE
- \* UTILITY COVERS SEALABLE