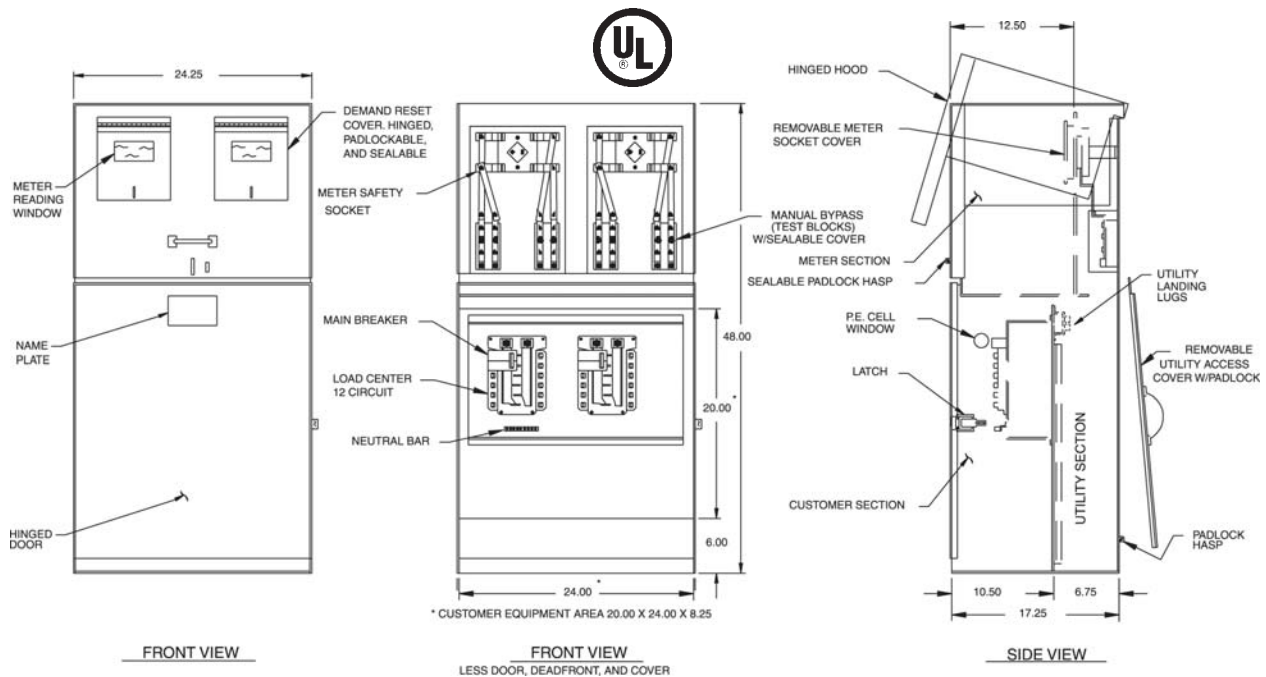




# MEUG24-D

(formerly MEUGLD)  
Caltrans Type III-CF

Dual metered underground service pedestal. Used where individual metered loads are billed at different rates or billed to different accounts.



## STANDARD FEATURES

- Standard voltage 120/240V 1 $\phi$  3W.
- Meter Socket: 4 jaw, 100 amps.
- Meter socket with test blocks.
- 12 circuit copper bussed interior.
- Main Breaker: 100 amp, 10kAIC.
- Utility Landing Lugs: 200 amps.
- Vandal-resistant hinged door and dead front.
- Light green powder coat finish in accordance with ASTM B-117. Custom colors available.
- Utility test section.

## OPTIONAL FEATURES

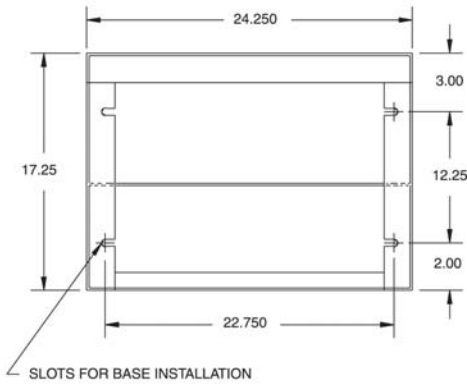
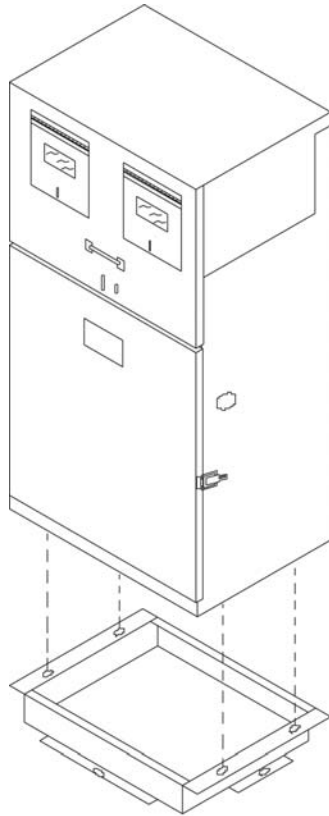
- Maximum voltage 480Y/277V 3 $\phi$  4W (may effect optional equipment).
- 12 circuit interior may be increased to 30 circuit.
- Higher AIC available upon request.
- P.E. cell, test switch, lighting relay may be added to standard.
- Some equipment modifications available. Consult your factory representative.
- Meter Sockets: 5 jaw or 7 jaw, 100 amps.
- Meter sockets with or without test blocks.
- Aluminum or stainless steel enclosure.
- Pad mount base available for concrete foundation. Order separately - MEUG24-BASE.
- Anchor bolts. Order separately - 714548 (quantity 4).
- Uni-body construction available in steel, stainless steel, and aluminum.

## SPECIFICATIONS

- 12 gauge corrosion resistant zinc coated steel construction. Hood and covers 14 gauge.
- Rainproof Type 3R enclosure.
- Complies with Caltrans specification ES-2F.
- Meets EUSERC 308 requirements.
- All factory wiring is 600 volt rated copper.
- Acceptable circuit breakers are GE, ITE, Crouse-Hinds/Murray, Cutler-Hammer.
- Suitable for use without main when no more than six service disconnects are installed and used in accordance with article 384 of the NEC.
- Listed by Underwriters Laboratories, Inc.

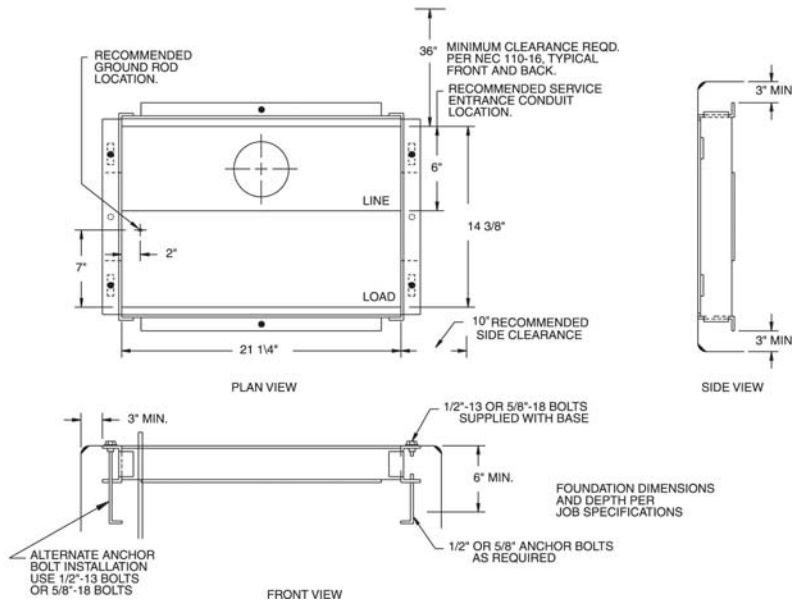
**STANDARD MODEL**  
*Custom configurations also available.  
 Consult your factory representative.*

Catalog No.	Amps	Voltage	Main	AIC Rating
MEUG24-D-M100/M100	200	120/240	100A/100A	10,000
<i>For aluminum enclosure order MEUG24A-            For stainless steel enclosure order MEUG24X-</i>				



**BOTTOM VIEW**  
**MOUNTING SLOT DETAIL**

**BASE DETAIL**



Tel: 866-MY-MYERS Fax: 951-520-1961  
 www.myerspwrproducts.com