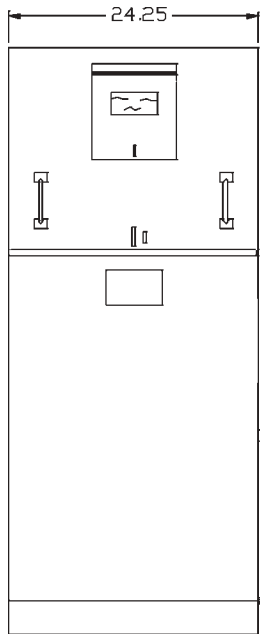




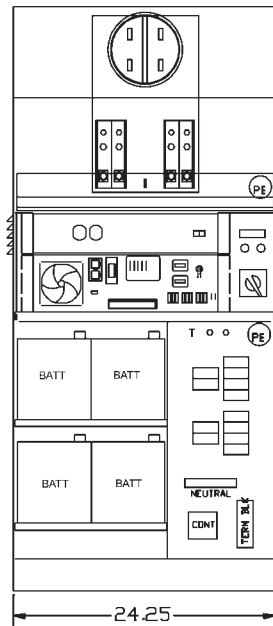
MEUG24-UPS

Metered/Unmetered with
MP Series™ UPS

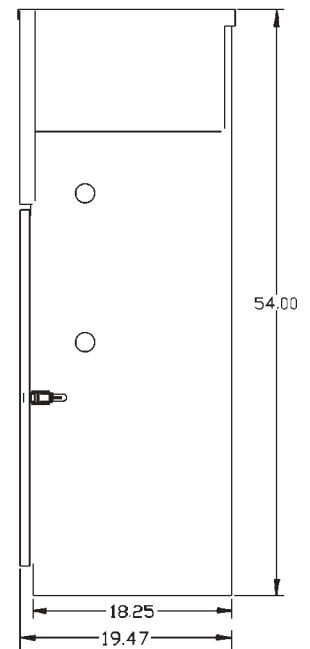
Provides street lighting and UPS-supported traffic signal service. Designed to supply both metered and unmetered power from the same service cabinet.



FRONT VIEW



FRONT VIEW
LESS DOOR, DEADFRONT, AND COVER



SIDE VIEW

STANDARD FEATURES

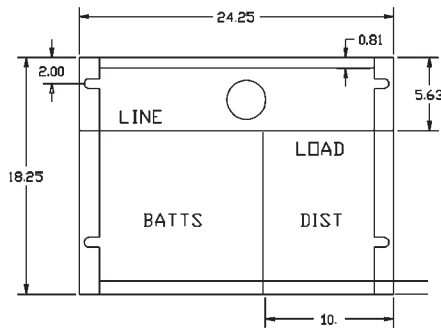
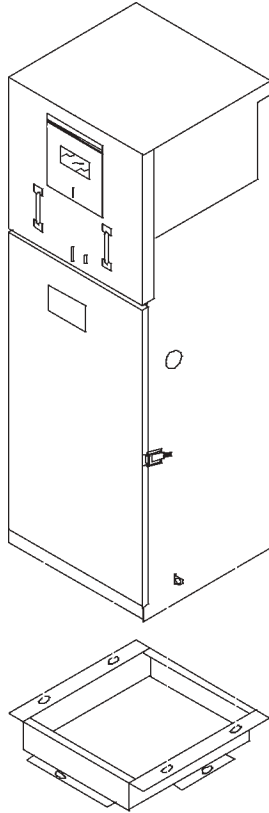
- Standard voltage 120/240V 1Ø 3W.
- Meter Socket: 4 jaw, 100 amps or 200 amps.
- Meter socket with test blocks.
- 2-6 circuit copper bussed interiors, metered/unmetered.
- Main Breaker: 2-100 amp, 2 pole, 10K AIC.
- MP Series™ MP2000 (2000VA output power)
- MP Series™ PTS Power Transfer Switch
- Four 79Ah sealed, maintenance-free batteries with wiring harness.
- Cooling fans for UPS and batteries.
- Utility Landing Lugs: 200 amps.
- Utility test section.
- Hinged door and deadfront.
- Light green powder coat finish in accordance with ASTM B-117. Custom colors available.

OPTIONAL FEATURES

- Meter Sockets: 5 jaw or 7 jaw, 100 amps or 200 amps.
- Meter sockets with or without test blocks.
- Main breaker: 100 amp, 2 pole or 4 pole.
- Higher AIC available upon request.
- MP Series™ (2400VA or 2700VA output power).
- Battery Options: (four) 33Ah, 55Ah, 65Ah or 79Ah batteries.
- Battery heater mat set.
- 12 gauge stainless steel cabinet.
- P.E. cell, test switch, lighting relay may be added to standard.
- Generator Set Options: customer specified generator receptacle, manual transfer switch for generator power, circuit breaker protection.
- Some equipment modifications available. Consult your factory representative.
- Pad Mounting Base available for concrete foundation. Order separately - MEUG24-BASE.
- Anchor Bolts. Order separately - 714548 (quantity 4)

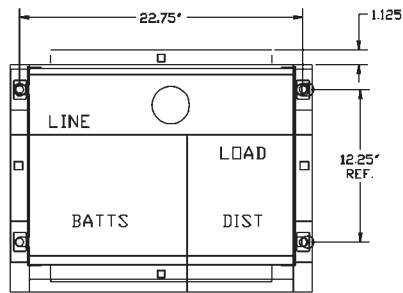
SPECIFICATIONS

- 125 Aluminum construction. Hood and covers .090 aluminum.
- Rainproof Type 3R enclosure.
- Complies with Caltrans specification ES-2E.
- Meets EUSERC 308 requirements.
- Acceptable circuit breakers are GE, ITE, Crouse-Hinds/ Murray, Cutler-Hammer.
- All factory wiring is 600 volt rated copper.
- Vandal resistant enclosure has side-hinged door and deadfront for easy installation and maintenance.
- Suitable for use without main when no more than six service disconnects are installed and used in accordance with article 384 of the NEC.

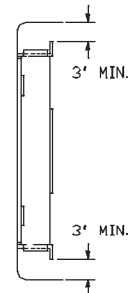


PEDESTAL PLAN VIEW
MOUNTING SLOT DETAIL

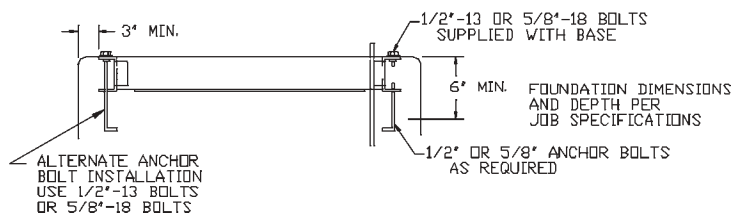
BASE DETAIL



PLAN VIEW



SIDE VIEW



FRONT VIEW

Myers MP Series

The *MP Series*™ Uninterruptible Power Supply (UPS) provides conditioned power to traffic signals worldwide and will operate a traffic signal intersection to your specifications - whether flashing red, or running the entire signal cycle. The PTS (Power Transfer Switch) allows the traffic service to function 1.) in normal operation, 2.) using the UPS with zero feedback to the utility, and 3.) while removing or servicing the UPS. The PTS also allows for an AC generator to plug directly through the service pedestal, providing power when prolonged power outages exceed battery capacity. When dealing with power interruptions of any kind, minor or major, traffic engineers can now be confident that traffic control will not compromise public safety. *MP Series*™ provides enough run time to allow an agency to make valued decisions regarding traffic control. With the Myers *MP Series*™ system, we give you the power you need to control critical traffic applications without interruption or complications.

General Specifications

Input/Output Voltage (VAC) nominal	120
Input/Output Frequency (Hz) nominal	60
Input Current (A)	12.0
Input Voltage Variation	-23% to +17%
Output Power (VA)	2000/2400/2700
Active Output Power (watts)	1500/1800/2000
Output Voltage Regulation %	+12%
Voltage Waveform	sine
Typical Efficiency %	95-97
Typical Output Voltage THD %	<4%
Max Charge Current (ADC)	3.5
Transfer Time (ms)	60
Audible Noise at 1m (dBA)	<32
Unit Operating Temp.	-37°C to +74°C
Battery Operating Temp.	-25°C to +74°C

Lightning/Surge Protection:

Passes ANSI/IEEE C.62.41/C.62.45 Cat A & B

Module Dimensions:	<u>MP2000</u>	<u>MP2400</u>	<u>MP2700</u>
Width (inches/mm)	17/432	17/432	17/432
Height (inches/mm)	5.25/133	5.25/133	5.25/133
Depth (inches/mm)	11/279	11/279	11/279
Weight (lbs/kg)	46.2/21	52.9/24	61/27

PTS Dimensions:

Width (inches/mm)	4.75/121	4.75/121	4.75/121
Height (inches/mm)	4.6/117	4.6/117	4.6/117
Depth (inches/mm)	6.5/165	6.5/165	6.5/165
Weight (lbs/kg)	7/3	7/3	7/3

Standard Features

- Transient voltage protection from damaging line spikes
- Low harmonic AC sinewave output
- Intelligent Boost Operation for brownout protection available
- Noise suppression, FCC Class A
- Multiple mounting configurations
- Meets or exceeds Caltrans, TXDOT, GADOT UPS/BBS specifications

Options

- Generator Kit: bypass switch, receptacle w/cover
- Separate battery enclosures
- Battery heater mats

Operation Modes

- Normal Operation - supports full functions for intersections not exceeding voltage/wattage of installed MP Series unit. *
- Flash Operation - Red/Amber flash operations for intersections that exceed voltage/wattage limits for Normal operation. *
- Normal/Flash Combo - Provides normal operation then reverts to flash after 2 hours or when 40% battery capacity is reached. *

* Total load cannot exceed unit's voltage/wattage limits for any operation.

Power Conditioning

- Filtered sine wave output
- Intelligent Boost Operation (optional) increases output voltage 12% if input voltage falls between -17% to -23% of nominal.

Communications & Alarms

- Form C dry relay contacts close on low battery
- RS232 status port, USB, SNMP
- LED indicator for online, on battery, low battery, overload & fault

Batteries and Run Time

- Up to four 79Ah, sealed and maintenance-free batteries Battery run time and recharging depends on load requirements and battery configurations. Refer to Myers publication *Battery Options and Run Time Calculations* for more details. For custom battery configurations, contact Myers Power Products.

Systems Management

- UPS MONS
- UPS MONS Network



“INVEST IN THE POWER OF MYERS”



866-MY-MYERS
www.myerspowerproducts.com

Specifications are subject to change without notice to reflect improvements and upgrades.